



# Round Square

## There is more in you...

**RACHAEL WESTGARTH**  
- Chief Executive Officer

**ROD FRASER**  
- Chairman of the Board of Trustees



# Round Square in a nutshell:

*a worldwide network of innovative schools  
in 40 countries across six continents*

Round Square schools share a passion for  
real-world experiential learning and discovery  
built around six IDEALS:


- International Understanding
- Adventure
- Democracy
- Leadership
- Environmental Stewardship
- Service



# Global Network of Schools

- 50 Years
- 170 Schools
- 40 Countries
- 5 Regions



A black and white photograph of a group of runners on a dirt trail. The lead runner is a man in a light-colored t-shirt and dark shorts, running towards the camera. Behind him are several other runners, some in dark clothing. The background shows a rocky, hilly landscape. The quote is overlaid in white text on the left side of the image, with large red quotation marks on either side.

***There is more to us than  
we know. If we can be  
made to see it, perhaps  
for the rest of our lives  
we will be unwilling to  
settle for less.***

***- KURT HAHN***

# Three Strategic Themes

**A world class  
educational  
approach**

**A platform  
for future  
leaders**

**A vibrant,  
connected  
network**



*A Third of Teachers: key benefit of RS membership is the ability to share ideas with like-minded teachers around the world - Cambridge University*

# Areas of focus - our shared ambitions

## **Collaboration**

More regional and individual school-hosted opportunities inc. service project, adventure and conference opportunities

## **Quality of Interaction**

More Professional Development opportunities; the development of cluster groups; structured mentoring

## **Network Development**

Growth in unrepresented or under-represented parts of the world; focus on quality of engagement/ good practice sharing

# We collaborate on:

- Embedding the IDEALS
- Student-led Conferences
- Community Service Projects
- Student and Teacher exchanges
- Sharing resources and opportunities
- Recognition for character-education





“ Instead of just coming to school and getting the grades you need, Round Square gives you amazing experiences, values and life skills making you a unique individual ”





*41% of Teachers: they have developed a more holistic approach to teaching as a direct result of their school's membership of Round Square - Cambridge University*

# The Round Square Discovery Framework

Three overlapping red circles are arranged horizontally across the lower half of the slide. Each circle contains a different stage of the framework: "The challenge", "The process", and "The results". The circles overlap in the center, creating a Venn diagram effect. The background of the slide is a grayscale photograph of people participating in an outdoor activity, possibly a ropes course, with ropes and harnesses visible.

**The  
challenge**

**The  
process**

**The  
results**



*ROUND SQUARE DISCOVERY FRAMEWORK - THE CHALLENGE:*

*“To construct a practical and useful framework that captures and communicates the unique spirit of a Round Square approach to teaching and learning”*



# Writing Group and Pilot Schools





Learner-centric:

Learners = Explorers

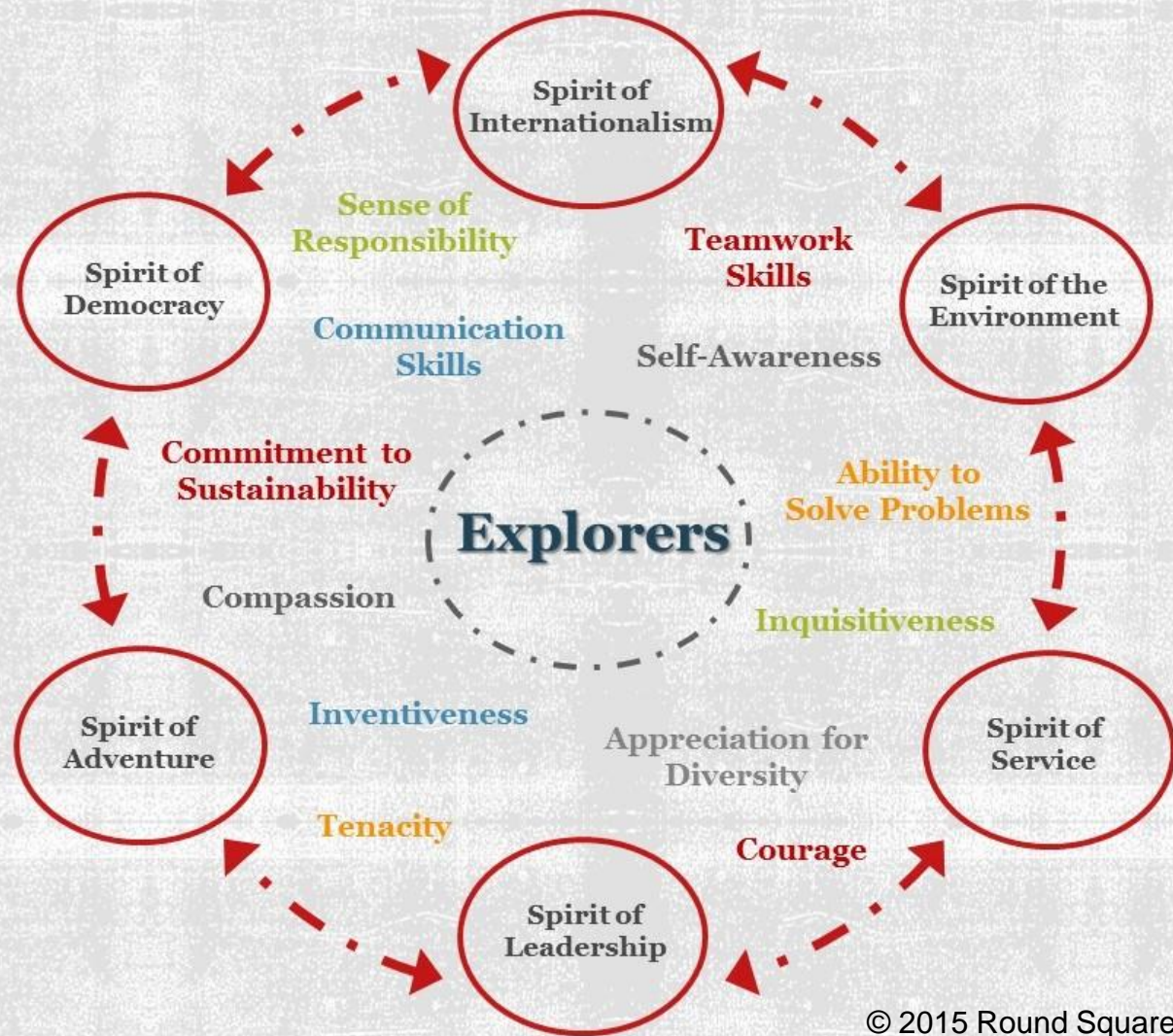
Attributes = Discoveries

Core Values = Spirits

“Being Round Square  
not doing  
Round Square”



# The Round Square Discovery Framework





# The Spirit of the IDEALS



## Spirit of Internationalism

is found in those who seek to discover and embrace the similarities and differences between nationalities and cultures and in ways that promote meaningful and lasting understanding, tolerance and respect.



## Spirit of Democracy

encompasses a sense of equality, fairness, social justice, a sense of responsibility to actively participate, and a desire to do what is right (for the greater good).



## Spirit of Environmentalism

centres on the significance of understanding mankind's place in the universe, the forces that shape our surroundings and the impact we have on those surroundings.



## Spirit of Adventure

is characterised by those who push themselves beyond their perceived limits, cross boundaries and discover that they are capable of more than they thought.



## Spirit of Leadership

recognises that successful leaders are driven by a desire to be of service to others and to nurture, guide, develop and help them to improve and succeed



## Spirit of Service

celebrates personal development through practical experience that brings sustainable support and benefit to others.



Model  
MUN

Debate  
Activities

Elections

DEMOCRACY

Student  
Voice

Political  
Studies

Student Rep  
Council

**Inquisitiveness**

**Courage**

**Social  
Justice**

**Compassion**

**Belief**

**A SPIRIT OF  
DEMOCRACY**

**Human  
Rights**

**Advocacy**

**Sense of  
Responsibility**

**Appreciation  
for Diversity**

Overseas  
Service  
Project

Community  
Engagement

Sponsorship

SERVICE

Charity

Student  
Mentoring

Volunteering

Fundraising

Knowledge  
of World  
Issues

Appreciation  
for Diversity

Compassion

Ability to  
Solve  
Problems

Teamwork  
Skills

A SPIRIT OF  
SERVICE

Transcultural  
Understanding

Inventiveness

Commitment to  
Sustainability

Empathy



# APPLEBY COLLEGE



- Mapping to Appleby College Diploma
- Middle two (grade 8) Presentations of Learning
- Academic - Senior 2 English Reflective Essay
- Leadership Program - Report Card
- Residential Life Program

*“The flexibility and breadth of the Discovery Framework has allowed us to implement it where we see fit and where works best for the school”*

Sense of Responsibility	Ability to Solve Problems	Communication Skills	Inventiveness	Teamwork Skills
Leadership	Communication Skills	Communication Skills	Creativity	Teamwork Skills
Pro-Social / Responsibility	Creativity	Organization	Engagement with Arts	Physical Fitness
	Academic Capacity	Use of Technology		Inquisitiveness
Appreciation for Diversity	Courage		Self Awareness	Academic Capacity
Spirituality and Spiritual Diversity	Values, Ethics, Attitude	Compassion	Self Care and Personal Health	
Inclusion		Caring	Practical Life Skills	Commitment to Sustainability
Individual Identity	Resilience	Empathy	Self Regulation	Engagement with the Outdoors
Intercultural Understanding	Resilience	Service	Mental Health and Mindfulness	Environmental Stewardship



- Audit, surveys & creation of staff action groups
- Updating of curriculum docs mapped to discoveries
- Year 8 Humanities (e.g. night of the notables)
- New sequence and scope for wellbeing programme
- Ivanhoe Ambassadors - years 7 and 8

*What the Round Square Discovery Framework made us do was to examine and re-evaluate how we provide Global Citizenship Education to all members of the IGS community.*







# COLEGIO ANGLO COLOMBIANO



- Examination of framework vs vision, mission, values
- Use the RSDF in defining the profile of a graduate
- Work backwards to create schemes of work
- Build learning experiences into the curriculum

*It's about education not just qualifications. All of our schools are capable of graduating highly qualified students. Academic excellence is necessary, but not sufficient. Our future leaders must be exceptional people as well as exceptional scholars.*

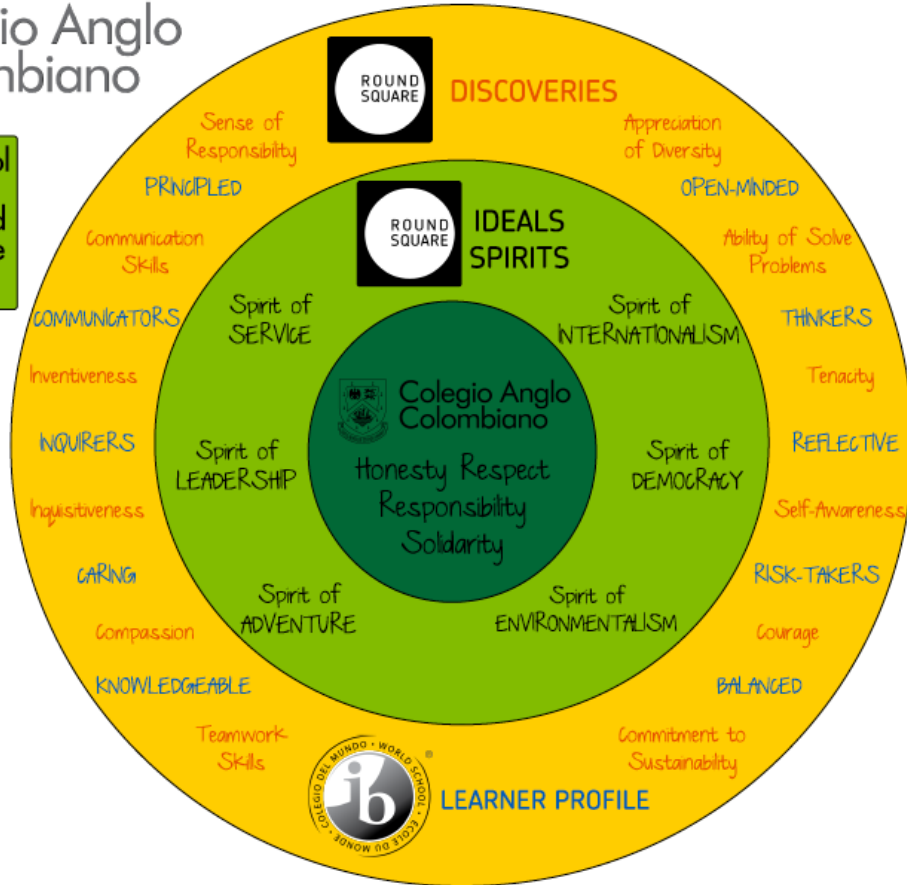


# Colegio Anglo Colombiano

Integration of school values, Round Square IDEALS and Discoveries and the IB Learner Profile



Colegio Anglo Colombiano



# BRITISH SCHOOL NEW DELHI

- Cross-Phase and Cross Curricular Projects
- Student Leadership Programme
- MUN Conferences
- Service and Outreach PSHE (Physical & Social Health Education)
- 'Save the Environment'
- Tech Integration



Round Square



Discovery Framework





## Collaborative dialogue for RS Member schools

- Open-source framework for all RS schools to adapt
- RS network developing collective voice
- Example-based: practical & constantly evolving online
- Clearer transferrable learning for students

# Our Research Programme

ROUND  
SQUARE

The whole  
is greater  
than the sum  
of the parts

Capacity for  
globally  
robust  
validation

Working  
together to  
measure the  
Unmeasurable

# Research outline

- Six leading universities
- Impact measurement
- Validation: holistic approach
- Direct student engagement
- Action research
- Creation of practical teaching resources
- Academic papers & resources



## CAMBRIDGE RESEARCH

### The Round Square approach:

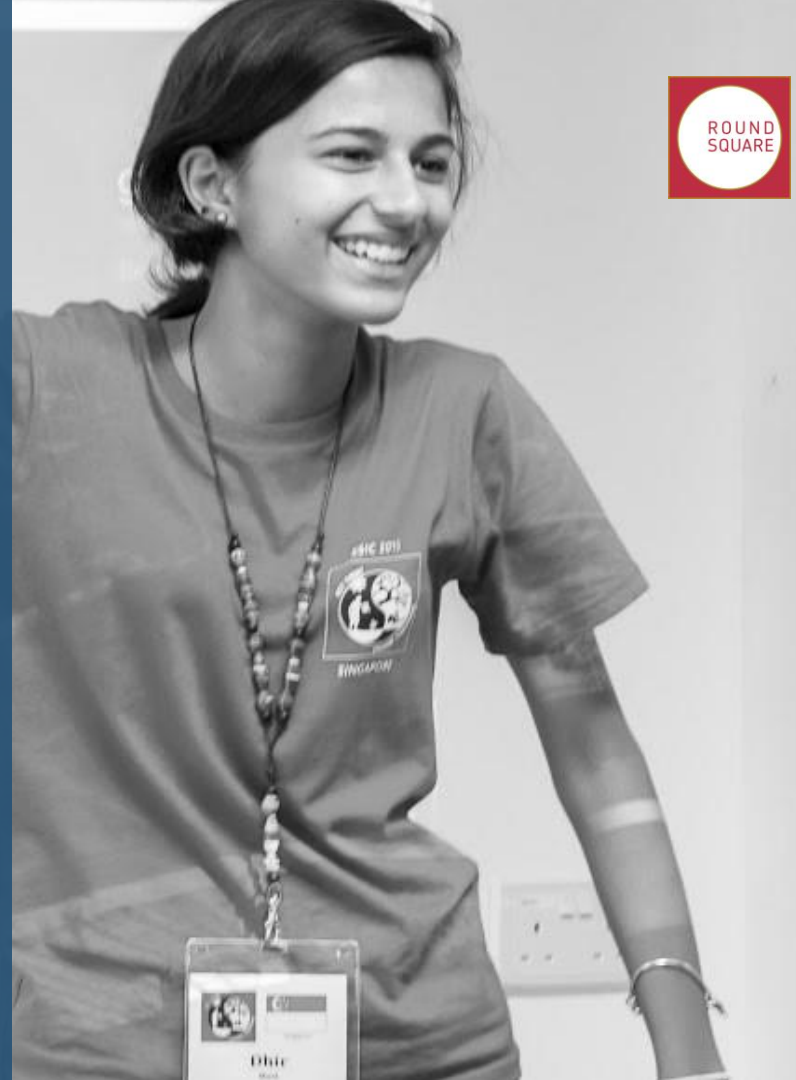
transcends gender/ cultural conditioning

resonates with parents & teachers alike

provides a framework/umbrella that is valued by member schools

*“The benefits are fantastic for their personal development: Resilience, confidence, independence, courage, leadership, articulation, self-belief, the list is endless!”*

- Parent





*“The IDEALS are somewhat counter-cultural, sitting uneasily with an increasingly dominant international culture of narrow academic performance and competitiveness that disregard values-led activities... It is clear, however, that those developing the Round Square Discovery Framework are seeking more creative ways of reducing the tensions between these positions by synthesising academic, skills-based, experiential, personal and moral learning in powerful ways.”*

*- Cambridge University*





**Questions?**