

# Data First: Demonstrating Quality and Diversity in New England Higher Education

NEASC Annual Meeting  
December 3, 2009

Elsa Nunez, President, Eastern Connecticut State University + Commission  
Wilfredo Nieves, President, Middlesex Community College (CT) + Commission  
Jill N. Reich, Vice President for Academic Affairs & Dean of Faculty, Bates College + Commission  
Barbara Brittingham, Director, Commission on Institutions of Higher Education

# Why the emphasis on student achievement and success?

## 1. Institutional Effectiveness

- Success in mission
- Continuous improvement
- The feedback loop

## 1. Public Accountability + Institutional Autonomy

- Responsibility to the public
- Responsibility to the federal government
- Building trust to preserve autonomy

Both important, one *urgent*

Can the higher education community maintain/increase confidence in self-regulation sufficient to keep the initiative and essential nature of assessment and measures of student success in the hands of self-regulation and outside federal regulation?

# Commission: Institutional Effectiveness & Assessment

1992 Policy on Institutional Effectiveness

---

2005 Standards for Accreditation approved

2006 Standards for Accreditation in effect

4.44, 10.10, Institutional Effectiveness numbered paragraphs

2007 Becoming More Explicit (E & S)

Achievement & Success

2008 Data First

Self-*study*

2009 “You are here.”

2010 Midcourse Standards review

2011 Midcourse Standards revision

## Commission

## Federal Government

1992 Policy on Institutional Effectiveness

.....

2005 Standards for Accreditation approved

Spellings Commission Announced

2006 Standards for Accreditation in effect

Spellings Commission Report

2007 Becoming More Explicit (E & S)

Lamar Alexander speaks

2008 Data First

Higher Education Opportunity Act

2009

New regulations

2010 Midcourse Standards review

More regulations

2011 Midcourse Standards revision

2012

Serious interest in re-authorization

2013

HEOA expires

# National Initiatives

## Institution-alike Initiatives

### Bachelor's degrees

**VSA:** NASULGC/APLU + AASCU

**U-CAN:** NAICU

**CIC/CLA:** Support Group

“First-generation templates”

### Community Colleges

**Achieving the Dream**

**Indicators (Lumina & Gates, 10/09)**

Increasing and measuring student success

# National Initiatives

## Linking Arms and Moving Forward

CHEA Initiative      Strengthening self-regulation

NILOA      National Initiative on Learning Outcomes Assessment

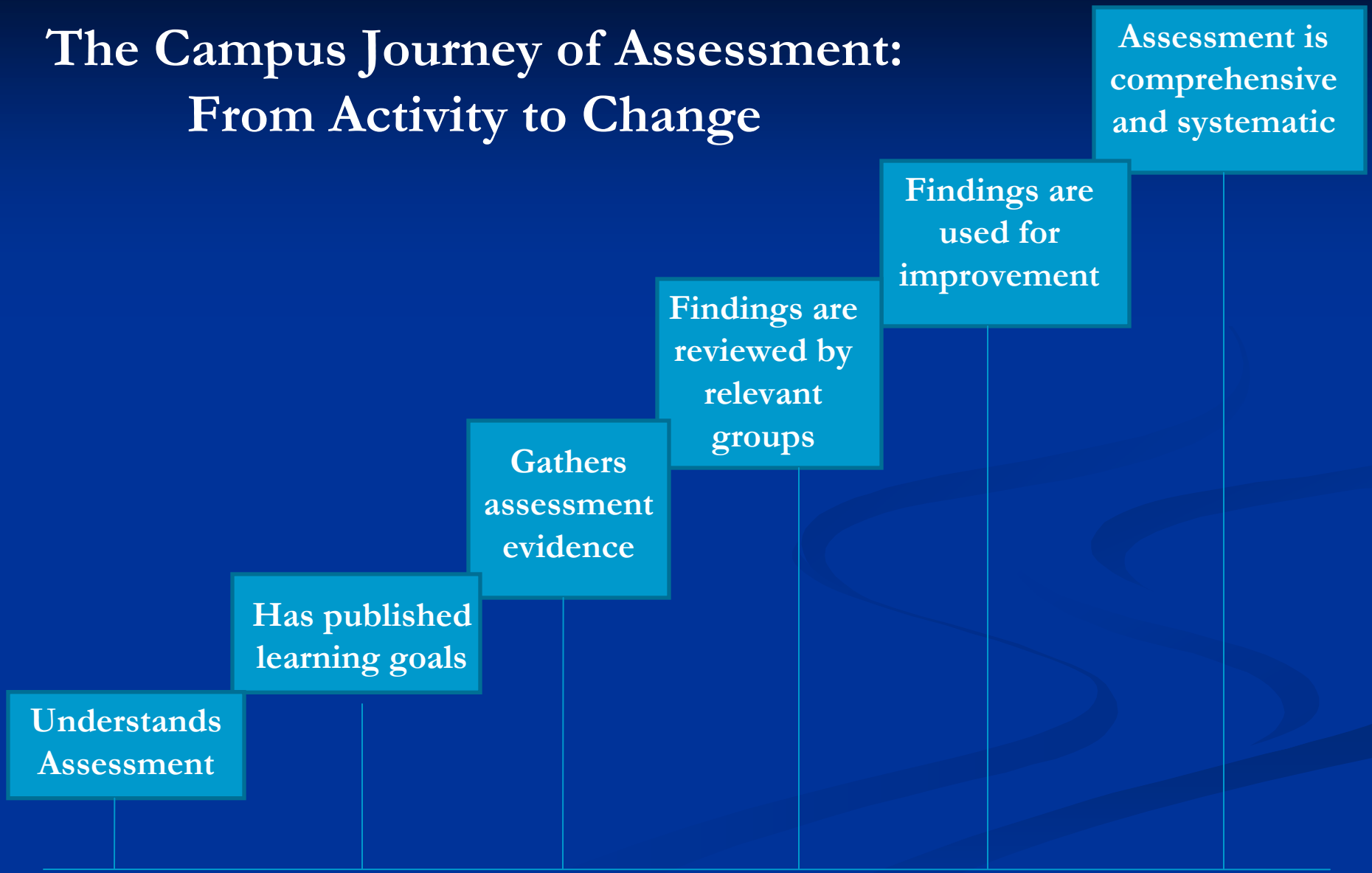
- Stan Ikenberry, George Kuh, Peter Ewell
- Survey
- Website

NLA/SLA      New Leadership Alliance for Student Learning Assessment

- CHEA + AAC&U statement. David Paris
- Institutional Certification

See also: <http://www.acenet.edu/Content/NavigationMenu/OnlineResources/Accountability/index.htm>

# The Campus Journey of Assessment: From Activity to Change



# What does this look like on campus?

CIHE Website: <http://cihe.neasc.org>

- Samples from E and S forms
- Measures from institutional websites

## Schematic

- What we see

## Views from campuses

- Three Commissioners: What their organizations are doing – and what they're doing on campus